

Brink Towing Systems BV  
Unit 7 Centrovell Industrial Estate, Caldwell RD  
T 02476 355 810  
F 02476 352 024  
salesin.box@brink.eu  
www.brink.eu



## Brink Fixed towbar



Are you a frequent user of a towbar? If the answer is yes, a fixed towbar is ideal for you. It is permanently available, maintenance-free and lasts the entire lifetime of the car. A fixed towbar is suitable for any type of bike carrier. And whether it comes to towing a trailer, caravan, horse box or boat trailer; a fixed towbar can face any challenge. Brink offers the widest choice of fixed systems in Europe.

### Benefits

- Maintenance free
- Permanently available
- Most competitive price
- Lasts entire life cycle of car

## Brink Flanged ball towbar



Do you have a van, pick-up or chassis cab? In that case, the Brink flanged ball towbar might be the best option for you. This fixed towbar is made for the heavier work and is therefore mostly used in the professional sector. It can easily pull trailers with a weight of more than 3 tonnes. The flanged ball is available in three types: 2 hole, 4 hole and 4 hole with a low ball height.

### Benefits

- Adjustable in height
- Permanently available
- For heavier work
- Interchangeable for other coupling systems

## About Brink

For over a hundred years, Brink has stood for quality and expertise in the field of towbars. Thanks to our core values of innovation, ease of use and safety, we have become the world leader in the design, production, testing and sale of flanged, fixed, detachable and retractable towbars along with vehicle specific wiring kits (VSK's). Brink is the ideal partner for both leading car manufacturers, professional installers and consumers. Thanks to that position we have no fewer than one thousand different models of towbars and wiring kits in our product range. We develop about two hundred new types of towbars every year and today approximately 25 million vehicles worldwide have one installed.

### Motto

Your perfect fit is our central starting point at Brink. Whether you want to go on holiday caravanning, sailing or cycling, we enable you to have an active life. We do this by providing the ideal connection between your passenger car and towed vehicle. Whether you are towing a bike carrier, trailer, horse box or boat trailer as a leisure user; thanks to our towbars and wiring kits you can travel in confidence and safety to your destination. The same applies for business users as well.

### Premium quality

Although each type of Brink towbar has its own specific characteristics, all are equal in innovation, ease of use and safety to ensure premium quality.

### Innovation

- Sustainable
- Stylish design
- Leight weight

### Ease of use

- Tailor made
- Wide turning angle
- Unique integrated eye

### Safety

- Extensive testing
- Amalgamated norms
- Qualitative assembly



# • Your perfect fit

## Brink towbars



**BRiNK**

Your perfect fit  
brink.eu

**BRiNK**

Your perfect fit  
brink.eu

## Brink MX Retractable towbar



Do you use your towbar regularly, is the design of your car important to you and do you want maximum usability? The retractable towbar is the optimum solution. In stored position, it is invisible. But with a simple hand movement the towbar is ready to use.

### Innovation

- Invisible
- Retractable
- Instantly available
- Towball adapted to bumper

### Ease of use

- No maintenance
- Ergonomic rotary knob to unlock
- Easy activation by lever under car
- Towball can be stored behind bumper

### Safety

- Audible and visible lock
- Same strength as fixed towbar
- Towball always connected to module
- Maximum towing weight and nose load



## Brink BMU Vertically detachable towbar



Are you looking for a towbar that can be made completely invisible after use? In that case, the Brink vertically detachable towbar is the solution. The towball can be removed and stored in your boot whilst the electrical socket can be folded up behind the bumper. An invisible solution.

### Innovation

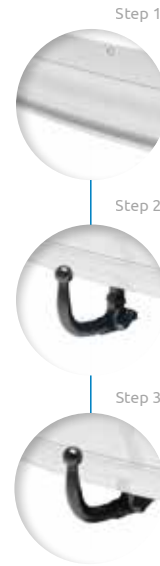
- Invisible
- Vertical detachable
- Available in seconds
- Towball simply attachable

### Ease of use

- No maintenance
- Storage bag for towball
- Visible instructions to operate
- Ergonomic rotary knob to detach

### Safety

- Anti-theft lock
- Audible and visible lock
- Same strength as fixed towbar
- Maximum towing weight and nose load



## Brink BMA Diagonally detachable towbar



Are you looking for a detachable towbar that excels in usability? In that case, a diagonally detachable towbar is ideal for you. In no other detachable system the ball can be attached and removed so quickly and with so little effort. Another advantage is that the towball housing is almost invisible after detaching it.

### Innovation

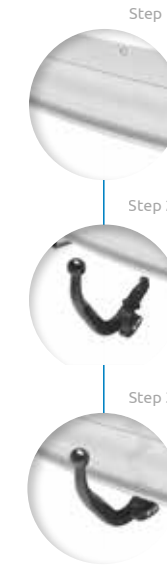
- Diagonal attachable
- Available in seconds
- Housing easy to locate
- Towball simply attachable

### Ease of use

- No maintenance
- Storage bag for towball
- Visible instructions to operate
- Ergonomic rotary knob to detach

### Safety

- Anti-theft lock
- Audible and visible lock
- Same strength as fixed towbar
- Maximum towing weight and nose load



## Brink RMC Kit Bike carrier solution



Do you like cycling, but is your car classed as a non-towing vehicle by the vehicle manufacturer? The Brink bike carrier solution can solve this problem. This system allows you to carry weight instead of pulling it. Virtually every bike carrier fits onto this carrier solution.

### Innovation

- Diagonal attachable
- Available in seconds
- Housing easy to locate
- Towball simply attachable

### Ease of use

- No maintenance
- Storage bag for towball
- Visible instructions to operate
- Ergonomic rotary knob to detach

### Safety

- Anti-theft lock
- Audible and visible lock
- Maximal vertical load capacity
- Safety strip to enable exclusive bike carrier use

